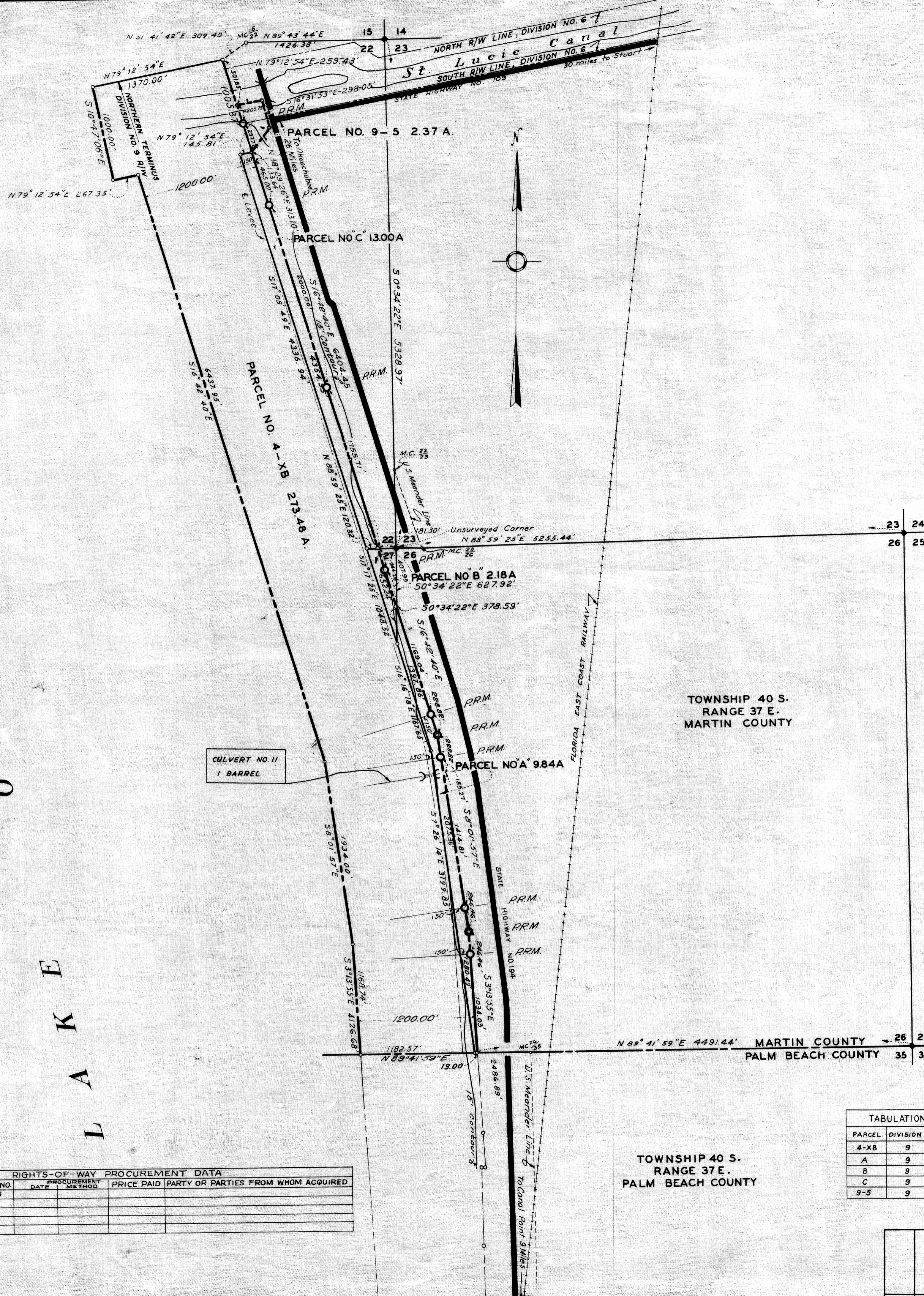
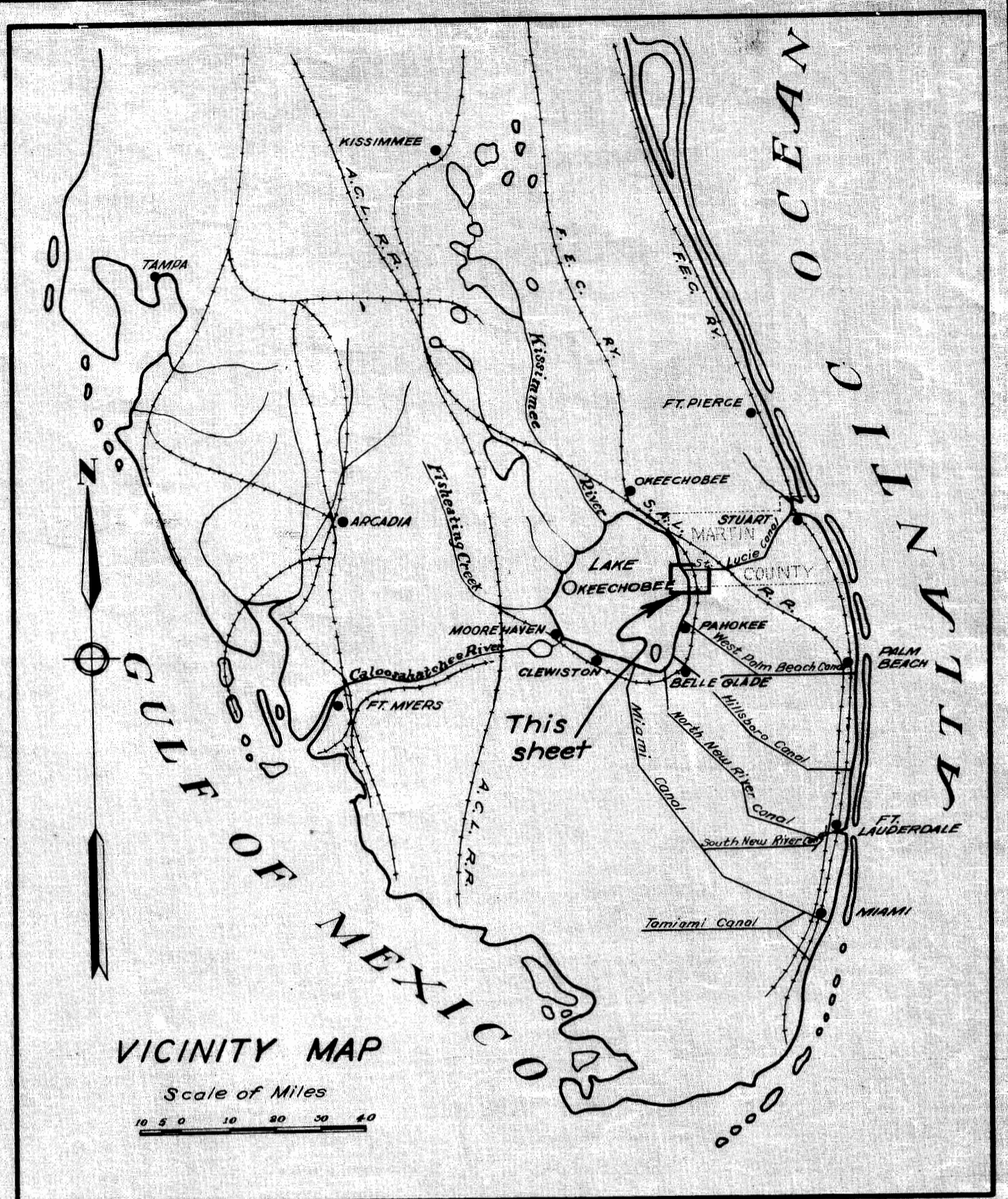


Book 2 Page 22

V F DEPARTMENT.



17937
 FILED AT
 FEB 13 1939
 MARTIN COUNTY
 FLORIDA
 J.P. Penney, Clerk



KNOW ALL MEN BY THESE PRESENTS: That this sheet is a map showing the location and rights-of-way of improvements of the South Shore Levee by the United States under authority of the River and Harbor Act adopted by the Congress of the United States and approved by the President on July 3, 1930, adopting a project designated as Caloosahatchee River and Lake Okeechobee Drainage Areas, Florida. This sheet also contains all legal certificates appertaining to said rights-of-way in Martin County, Florida.

I HEREBY CERTIFY: That this map is a true and correct representation of a survey of the South Shore of Lake Okeechobee in Martin County, Florida, made by the Engineers of the Army of the United States during the years 1931 to 1938 inclusive; that the measurements shown hereon are correct, and that R.R.M.s have been established as shown hereon to the best of my knowledge and belief.

W. H. Walker
 Colonel, Corps of Engineers, U.S. Army
 District Engineer, Jacksonville, Florida, District

I HEREBY CERTIFY: That this plot complies with the provisions of "An Act to Regulate the Making of Surveys and Filing for Record of Maps and Plots in the State of Florida", approved by the Governor on the 11th day of June, 1925.

J.P. Penney
 Clerk of Circuit Court of
 Martin County, Florida.

By
 Deputy Clerk.

I HEREBY CERTIFY: That this map of the South Shore Levee and improvements in Martin County, Florida, was made under my direction, and is true and correct to the best of my knowledge and belief.

Carawan Nelson
 Senior Engineer,
 United States Engineer Department.

APPROVED for record this 3rd day of Feb., 1939
W. H. Walker
 County Engineer of
 Martin County, Florida.

LEGEND

- RIGHT OF WAY LINES
- PARCEL BOUNDARY LINES
- COUNTY LINES
- TOWNSHIP AND RANGE LINES
- SECTION LINES
- GOVT LOT LINES
- MEANDER LINES
- PERMANENT REFERENCE MONUMENTS
- POINTS OF INTERSECTION (MONUMENTED)
- SECTION CORNERS

Note: Bearings of all lines on this sheet are based on a true meridian derived from U.S.C. & G. Survey triangulation network at triangulation station "Spoil" in the vicinity of Moore Haven.

Note: The 15' Contour was superimposed on this sheet from a compilation of various surveys which were made prior to the construction of the levee.

RIGHTS-OF-WAY		PROCUREMENT DATA	
PARCEL	D.O. INDEX NO.	DATE	METHOD
4-XB	4403B		
A	4405		
B	4406		
C	4407		
9-5	4408		

PARCEL	DIVISION	SECTION	TOWNSHIP	RANGE	ACREAGE	D.O. INDEX NO.
4-XB	9	22,26,27	40S	37E	273.48	4403-B
A	9	26	40S	37E	9.84	4405
B	9	27	40S	37E	2.18	4406
C	9	22	40S	37E	13.00	4407
9-5	9	22	40S	37E	2.37	4408

TOWNSHIP 40 S.
 RANGE 37 E.
 PALM BEACH COUNTY

CALOOSAHATCHEE RIVER AND LAKE OKEECHOBEE DRAINAGE AREAS, FLORIDA.

MAP SHOWING LOCATION OF LEVEE RIGHTS-OF-WAY IN MARTIN COUNTY, FLORIDA.

IN 1 SHEET SCALE: 1" = 600' SHEET NO. 1

U.S. ENGINEER OFFICE - JACKSONVILLE, FLORIDA, DEC. 1938.

SUBMITTED: *J.P. Penney* ASSISTANT ENGINEER
 RECOMMENDED FOR APPROVAL: *Carawan Nelson* SENIOR ENGINEER
 APPROVED: *W. H. Walker* COLONEL CORPS OF ENGINEERS

DRAWN BY: R.J.D.S.H. FILE NO. 302-12063
 TRACED BY: K.C.C.C.V.
 CHECKED BY: R.N.S.

BY	DATE	CHARACTER OF REVISIONS